

# ALLIANCE ConstruXion GROUP



# CONSTRUCTION PRODUCTS

Alliance Construxion Group

Jim Brown | 404.784.1416 | [jbrown@alliancexgroup.com](mailto:jbrown@alliancexgroup.com)

Wholly Owned by HEBEI MINMETALS CO.,LTD



Hebei Minmetals Co. Ltd., is a joint stock enterprise which specializes in manufacturing and export of wire, agricultural fencing, wire fencing and steel construction products. Historically, Hebei Minmetals was a structured state-run trading company. Hebei Minmetals Co. Ltd., was established in September 2004 with registered capital of \$5,000,000 USD and has grown dramatically since its inception. Our annual export sales exceed \$200M per annum.

Alliance Construxion Group was formed in 2010 as a subsidiary of HMM with its focus around the sales and marketing of construction products into North & Central America along with the Caribbean. The main product focus is concrete forming, fasteners & industrial wire products sold through both wholesale and industrial channels. The value proposition to our clients is our ability to offer highly mixed container options with all the products described in this brochure.

The main products of Hebei Minmetals include industrial wire, wire fencing, fence posts, lawn & garden products, construction materials, fasteners and household products. Hebei's Sales Network has extensive resources and extends to North & South America, Africa, Australia, Europe and Asia.

The Hebei Minmetals enterprise extends to 15 company owned manufacturing mills in Northern China, plus a joint venture manufacturing company in Southern Thailand. The base of this large enterprise started with four manufacturing operations. (Wuxin Garden Products Co. Ltd, Hebei Wuxin Wire & Netting Products Co. Ltd, Hebei Wuxin Fiberglass Products Co. Ltd and Hebei Jinmeitai Hardware Products Co. Ltd. along with a joint venture ownership in Hebei Haixin Hardware Products Co. Ltd.) In keeping with our export trading roots, Hebei Minmetals also sources non-company produced products for our clients from strategic mill partners in China as well as Southeast Asia.

Another value added option Hebei Minmetals offers our clients, for production in China, is warehousing and inventory management. This enables the Hebei team to stage multiple product groups which allow for highly mixed containers. The ability to mix multiple product groups in one container provides many of our clients with both improved cash flow and turn days.

Hebei Minmetals has a very professional and energetic staff whose single focus is serving our clients every day. We strive to help eliminate the headaches associated with the import business by executing and meeting our client's expectations around pricing, quality and service.

We look forward to the opportunity to work with you in the future.

Best Regards,  
Hebei Minmetals Company, Ltd.

[www.alliancexgroup.com](http://www.alliancexgroup.com)  
[www.hebeiminmetals.com.cn](http://www.hebeiminmetals.com.cn)

# INTRODUCTION



# CATALOG

NAIL STAKES	●	02
ANCHOR BOLTS	●	03
THREADED ROD	●	03
BAR TIE	●	04
TIE WIRE AND TIE WIRE REELS	●	04
METAL BAR SUPPORTS	●	05-06
FOUNDATION CHAIRS	●	07
PLASTIC ROD CHAIR MUSHROOM CAPS	●	08
METAL LATH	●	09
STUCCO NETTING	●	10
EROSION, VINEYARD AND T-POSTS	●	10
FORMING PRODUCTS	●	11-12
UNDER FORMING PRODUCTS	●	13
MASONRY PRODUCTS	●	14
DISPLAY RACK FOR CONCRETE	●	15
ACCESSORIES ITEMS AND FASTENERS		

# NAIL STAKES



## Round

Thickness	Points	Lengths	Finish
3/4"	Pulled/Pencil	12" to 48"	Oiled/Painted
7/8"	Pulled/Pencil	12" to 48"	Oiled/Painted

Available with holes and without holes  
Packaging 10 piece per bundle



## Square

Thickness	Points	Lengths	Finish
5/8"	Pulled/Pencil	12" to 48"	Oiled/Painted

Available with holes and without holes  
Packaging 10 piece per bundle



## Flat

Thickness	Points	Lengths	Finish
3/8"x1-1/2"	C or V type	12" to 48"	Oiled/Painted

Packaging 10 piece per bundle



## Flat I Style

Thickness	Points	Lengths	Finish
3/8"	V type	12" to 48"	Oiled/Painted

Packaging 10 piece per bundle

## ANCHOR BOLTS



Diameter	Lengths	Increments	Finish
3/8"	6" to 36"	2"	Plain or HDG
1/2"	6" to 36"	2"	Plain or HDG
5/8"	6" to 36"	2"	Plain or HDG
3/4"	6" to 36"	2"	Plain or HDG
7/8"	6" to 36"	2"	Plain or HDG
1"	6" to 36"	2"	Plain or HDG
1-1/4"	6" to 36"	2"	Plain or HDG

Cartons - with hex nut & round washer standard

Bags - with hex nut only - unless specified differently

## WASHERS



Square Washer with Round Hole



Square Washer with Slotted Hole

Type	Size	Finish
Round or Slotted	2"x2"x1/8"	Plain or HDG
Round or Slotted	2"x2"x3/16"	Plain or HDG
Round or Slotted	2"x2"x1/4"	Plain or HDG
Round or Slotted	2-1/2"x2-1/2"x1/4"	Plain or HDG
Round or Slotted	3"x3"x1/8"	Plain or HDG
Round or Slotted	3"x3"x3/16"	Plain or HDG
Round or Slotted	3"x3"x1/4"	Plain or HDG
Round or Slotted	3"x3"x3/8"	Plain or HDG
Round or Slotted	3-1/2"x3-1/2"x1/4"	Plain or HDG
Round or Slotted	3-1/2"x3-1/2"x3/8"	Plain or HDG
Round or Slotted	4"x4"x 1/4"	Plain or HDG

## THREADED ROD



Diameter	Lengths	Finish
1/4"	1', 1.5', 2', 3', 6', 10', 12'	Zinc Plated/HDG/Stainless
5/16"	1', 1.5', 2', 3', 6', 10', 12'	Zinc Plated/HDG/Stainless
3/8"	1', 1.5', 2', 3', 6', 10', 12'	Zinc Plated/HDG/Stainless
1/2"	1', 1.5', 2', 3', 6', 10', 12'	Zinc Plated/HDG/Stainless
5/8"	1', 1.5', 2', 3', 6', 10', 12'	Zinc Plated/HDG/Stainless
3/4"	1', 1.5', 2', 3', 6', 10', 12'	Zinc Plated/HDG/Stainless
7/8"	1', 1.5', 2', 3', 6', 10', 12'	Zinc Plated/HDG/Stainless
1"	1', 1.5', 2', 3', 6', 10', 12'	Zinc Plated/HDG/Stainless
1-1/8"	1', 1.5', 2', 3', 6', 10', 12'	Zinc Plated/HDG/Stainless
1-1/4"	1', 1.5', 2', 3', 6', 10', 12'	Zinc Plated/HDG/Stainless

## BAR TIES



Bar Tie

Gauge	Lengths	Increments	Finish
16	4" to 30"	1/2"	Plain, EG, HDG, PVC
16.5	4" to 30"	1/2"	Plain, EG, HDG, PVC
17	4" to 30"	1/2"	Plain, EG, HDG, PVC
18	4" to 30"	1/2"	Plain, EG, HDG, PVC
19	4" to 30"	1/2"	Plain, EG, HDG, PVC

Packaging: 4x1000, 5x1000, 1x4000, 1x5000

## TIE WIRE AND TIE WIRE REELS



Gauge	Coil Weights	Hole Type	Finish
15	3.0lbs/3.5lbs	Round/Square	Black Annealed, Galvanized or PVC
16	3.0lbs/3.5lbs	Round/Square	Black Annealed, Galvanized or PVC
16.5	3.0lbs/3.5lbs	Round/Square	Black Annealed, Galvanized or PVC
17	3.0lbs/3.5lbs	Round/Square	Black Annealed, Galvanized or PVC



10 Coils to a Master

### Bundle Wire

9	50/100lbs	Round	Black Annealed, Galvanized or PVC
11	50/100lbs	Round	Black Annealed, Galvanized or PVC
12	50/100lbs	Round	Black Annealed, Galvanized or PVC
14	50/100lbs	Round	Black Annealed, Galvanized or PVC
16	50/100lbs	Round	Black Annealed, Galvanized or PVC



Bar Tie Tool



**Twister Tools & Tie Wire Dispensers**  
 Manual & automated bar tie twister tools  
 Wood or plastic handles available  
 Aluminum or plastic dispensers

## BAR SUPPORTS

### Bar Chair-BC

**Heights**            **Height Increments**  
 3/4" to 2"            1/4"

**Finishes**  
 Plain, Dipped Feet, Tipped Feet, Epoxy Coated, HDG, Stainless



### High Chair-HC

**Heights**            **Height Increments**  
 2" to 6"            1/4"

**Finishes**  
 Plain, Dipped Feet, Tipped Feet, Epoxy Coated, HDG, Stainless



### Continuous High Chair-CHC

**Heights**            **Height Increments**  
 2" to 6"            1/4"

**Lengths**  
 5' & 10'

**Finishes**  
 Plain, Dipped Feet, Tipped Feet, Epoxy Coated, HDG, Stainless

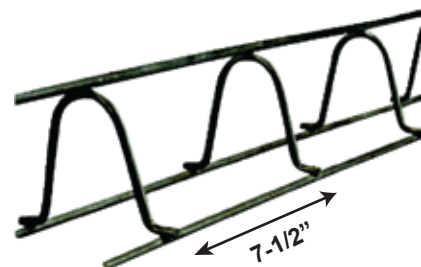


### Continuous High Chair Upper-CHCU

**Heights**            **Height Increments**  
 2" to 6"            1/4"

**Lengths**  
 5' & 10'

**Finishes**  
 Plain, Dipped Feet, Tipped Feet, Epoxy Coated, HDG, Stainless



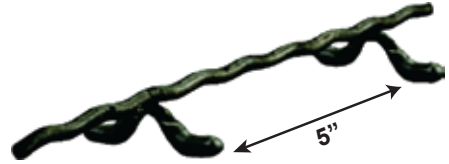
# BAR SUPPORTS

## Slab Bolster-SB

**Heights** 3/4" to 3"  
**Height Increments** 1/4"

**Lengths** 5' & 10'

**Finishes**  
Plain, Dipped Feet, Tipped Feet, Epoxy Coated, HDG, Stainless

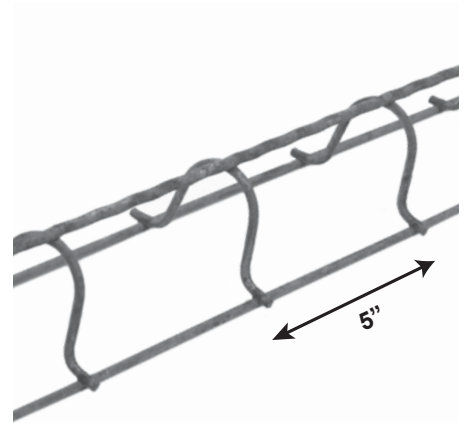


## Slab Bolster Upper-SBU

**Heights** 3/4" to 3"  
**Height Increments** 1/4"

**Lengths** 5' & 10'

**Finishes**  
Plain, Epoxy Coated, HDG, Stainless



## Beam Bolster-BB

**Heights** 1" to 5"  
**Height Increments** 1/4"

**Lengths** 5' & 10'

**Finishes**  
Plain, Dipped Feet, Tipped Feet, Epoxy Coated, HDG, Stainless

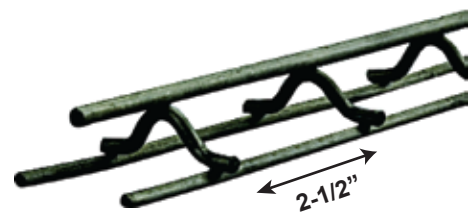


## Beam Bolster Upper-BBU

**Heights** 1" to 5"  
**Height Increments** 1/4"

**Lengths** 5' & 10'

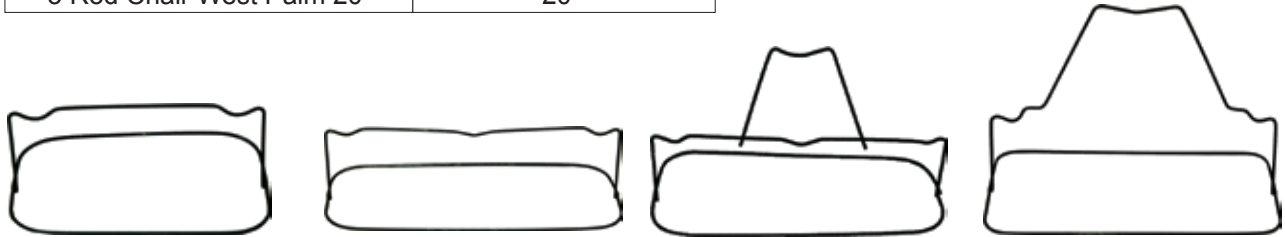
**Finishes**  
Plain, Epoxy Coated, HDG, Stainless



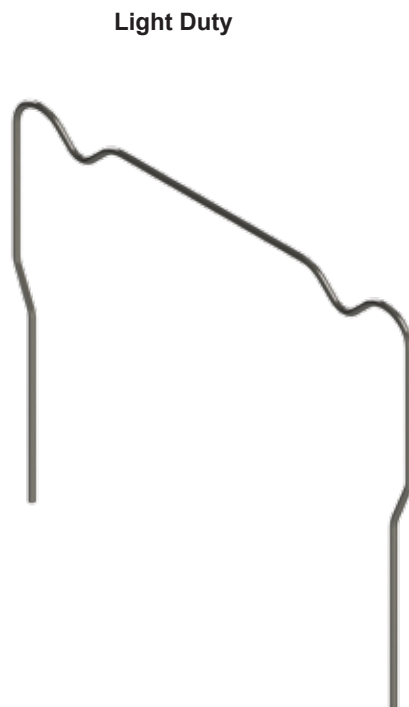
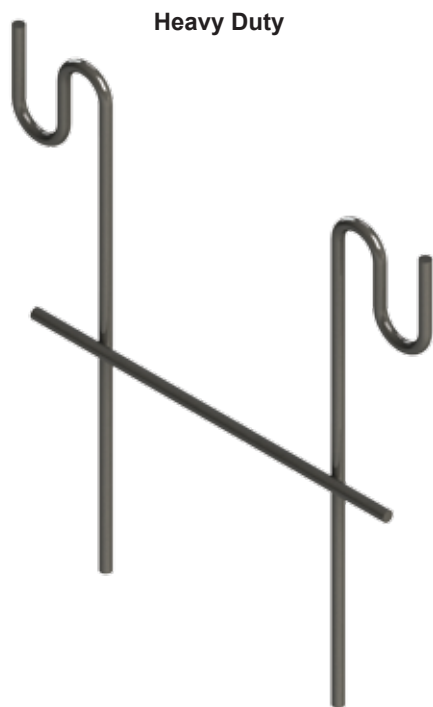


## FOUNDATION CHAIRS

Item	Size Available
2 Rod Chair	6/8", 10/12"
3 Rod Chair	16", 20"
3 Rod Chair West Palm 16	16"
3 Rod Chair West Palm 20	20"



## Quick Chairs



# PLASTIC ACCESSORIES

## OSHA Rebar Cap

Vertical Applications  
 Fits - rebar sizes 3/8" thru 3/4" diameters  
**Packaging:** 25 or 100 piece cartons



OSHA Rebar Cap



Rebar Safety Cap

## Rebar Safety Caps

Horizontal Applications  
 Fits - rebar sizes 3/8" thru 3/4" diameters  
**Packaging:** 25 or 100 piece bags

## Mesh-up Chairs

Sizes	Packaging
1-1/2" - 2"	200 pcs/bag
2" - 2-1/2"	200 pcs/bag
2-1/2 - 3"	200 pcs/bag
3" - 3-1/2"	200 pcs/bag
3-1/2" - 4"	200 pcs/bag
4" - 4-1/2"	200 pcs/bag
4-1/2" - 5"	200 pcs/bag



## Rebar Paving Chairs

**Heights** 1" to 4"  
**Height Increments** 1/4"

**Packaging**  
 500 Pieces per Bag

## Strand Chairs

**Heights**  
 1" to 4"



## Plastic Slab Bolsters

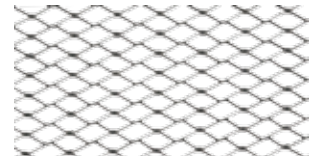
**Heights** 3/4" to 4"  
**Height Increments** 1/4"

2-1/2' lengths which easily snap together



## METAL LATH

Sheet Style	Lbs/Sq Yd	Sheet Size	Sq/Yds.	Pcs/Bundle
<b>Flat Lath</b>				
Flat Diamond	1.75 lbs.	27" x 96"	20	10
Flat Diamond	2.5 lbs.	27" x 96"	20	10
Flat Diamond	3.4 lbs.	27" x 96"	20	10
<b>Self-Furring</b>				
Dimpled	1.75 lbs.	27" x 96"	20	10
Dimpled	2.5 lbs.	27" x 96"	20	10
Dimpled	3.4 lbs.	27" x 96"	20	10
<b>V-Grooved</b>				
V-Grooved	1.75 lbs.	27" x 96"	20	10
V-Grooved	2.5 lbs.	27" x 96"	20	10
V-Grooved	3.4 lbs.	27" x 96"	20	10
<b>3/8" Hi Rib</b>				
3/8" Hi Rib	2.5 lbs.	27" x 96"	20	10
3/8" Hi Rib	3.4 lbs.	27" x 96"	20	10
3/8" Hi Rib	4.0 lbs.	27" x 96"	20	10



Flat Diamond



Dimpled



V-Groove



3/8" Hi Rib

Certifications – meets ASTM C847 standard specification for metal lath, ICC-ES Evaluation Report ESR-3487

## Brick Mesh

### Widths

10" & 15"

### Roll Lengths

10' & 50'



Brick Mesh

## Lath Corner Bead

### Widths

1", 2", 2-1/2" & 3"

### Lengths

4', 8' & 10'

### Finishes

Zinc & HDG



Corner Bead

## Expanded Flange Casing Bead

### Widths

1/4" to 1-1/4"

### Lengths

10'

# STUCCO NETTING

Sizes	Gauge	Finish	Roll Width
1-1/2" x 37-1/2" x 150'	17	Flat	68lbs
1-1/2" x 37-1/2" x 150'	17	Self-Furred	65lbs
1" x 36" x 150'	20	Flat	43lbs
1" x 36" x 150'	20	Self-Furred	40lbs
1" x 36" x 150'	20	Self-Furred	38lbs
1" x 36" x 150'	20	Self-Furred	36lbs
1" x 36" x 150'	20	Self-Furred	33lbs
1" x 4" x 150'			
1" x 12" x 150'			
1" x 18" x 150'			



Certifications meets ASTM C1032 and A641 standard specifications for stucco netting, ICC-ES Evaluation Report ESR-2733

## Erosion, Vineyard and T-Posts Studded Post

Weight	Lengths	Finish
.85 Lbs/ft	3' to 12'	Plain, Painted, HDG & Powder Coated
.95 Lbs/ft	3' to 12'	Plain, Painted, HDG & Powder Coated
1.10 Lbs/ft	3' to 12'	Plain, Painted, HDG & Powder Coated
1.25 Lbs/ft	3' to 12'	Plain, Painted, HDG & Powder Coated
1.33 Lbs/ft	3' to 12'	Plain, Painted, HDG & Powder Coated

\*Available with spade or without



## Drilled Post

Weight	Lengths	Finish
0.95lbs	6' to 8'	Painted
1.25lbs	6' to 8'	Powder Coated

## T-Post Drivers

**Lengths**  
24" & 36"

**Finish**  
Powder Coated



## FORMING PRODUCTS: Wall Ties

The difference between nominal & full ties – nominal has ends which are 5/8" shorter than full ties



Nominal

### Standard Nominal Ties

Sizes	Unit Qty.
4" Nominal	100
6" Nominal	100
8" Nominal	100
10" Nominal	100
12" Nominal	100
14" Nominal	50
16" Nominal	50
18" Nominal	50
20" Nominal	50
22" Nominal	50
24" Nominal	50

### Two Combo Ties

Sizes	Unit Qty.
6-8"	100
8-10"	100
10-12"	100
12-14"	50
14-16"	50
16-18"	50
18-20"	50
20-22"	50
22-24"	50

### Three Combo Ties

Sizes	Unit Qty.
6-8-10"	100
8-10-12"	100
10-12-14"	50
12-14-16"	50
14-16-18"	50
16-18-20"	50
18-20-22"	50
20-22-24"	

Standard Ties = 2250 lbs work loads  
(based on 2:1 Ratio)



Full

### Full Wall Ties

Sizes	Unit Qty.
4" Full	100
6" Full	100
8" Full	100
10" Full	100
12" Full	100
14" Full	50
16" Full	50
18" Full	50
20" Full	50
22" Full	50
24" Full	50

### Two Combo Ties

Sizes	Unit Qty.
6-8"	100
8-10"	100
10-12"	100
12-14"	50
14-16"	50
16-18"	50
18-20"	50
20-22"	50
22-24"	50

### Three Combo Ties

Sizes	Unit Qty.
6-8-10"	100
8-10-12"	100
10-12-14"	50
12-14-16"	50
14-16-18"	50
16-18-20"	50
18-20-22"	50
20-22-24"	

Full Ties = 3000 lbs work loads  
(based on 2:1 Ratio)

## Turnbuckles



# FORMING PRODUCTS

Snap Tie Wedge



Long Wedge Bolt



Standard Wedge Bolt



Flat Head Pin



Round Head Pin



Curved Wedge



Combo Pin



Straight Wedge



**FORMING PRODUCTS**

**A Bracket**



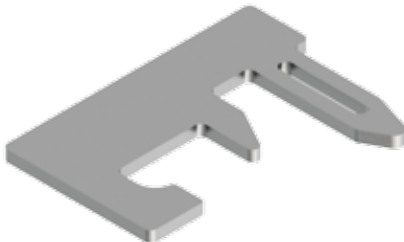
**C Bracket**



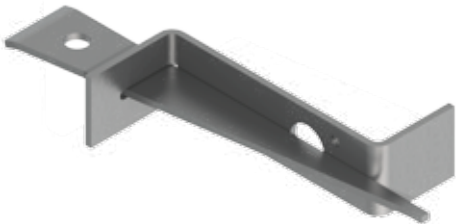
**John Bracket**



**Gang Wedge Bolt**



**Waler Holder**



**Spreader Cleats**



Wall Thickness	Plywood Thickness
6"	3/4", 1-1/8", 1-5/8"
8"	3/4", 1-1/8", 1-5/8"
10"	3/4", 1-1/8", 1-5/8"
12"	3/4", 1-1/8", 1-5/8"
14"	3/4", 1-1/8", 1-5/8"
18"	3/4", 1-1/8", 1-5/8"

Safe working load of 750 lbs is based on an approximate 2:1 safety factor

# MASONRY PRODUCTS

## Block Mesh

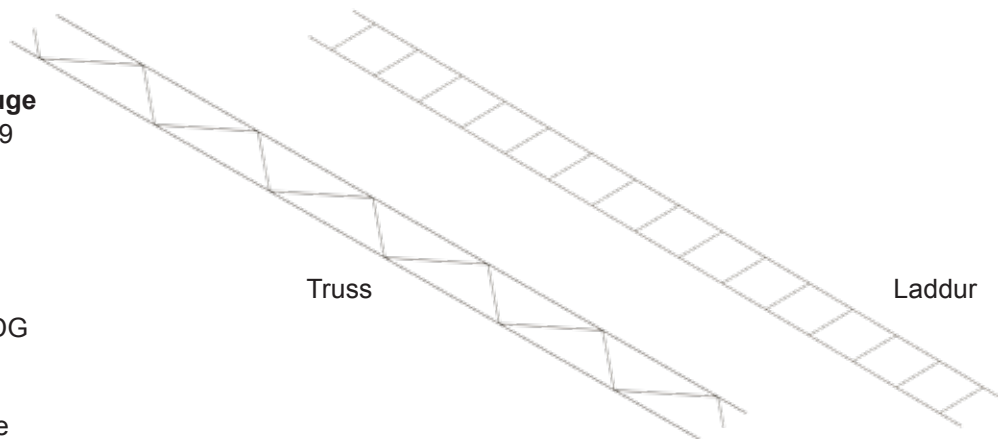
**Heights**  
4" to 12"

**Gauge**  
9 x 9

**Lengths**  
10'

**Finishes**  
Mill Galvanized or HDG

**Packaging**  
50 Pieces to a Bundle



## Brick Ties

**Size**  
.870" W x 6.370" H

**Nominal Thickness**  
.030" +/- .00031 (22G)

**Styles**  
Straight & Scalloped

**Packaging**  
250 or 500 Pieces

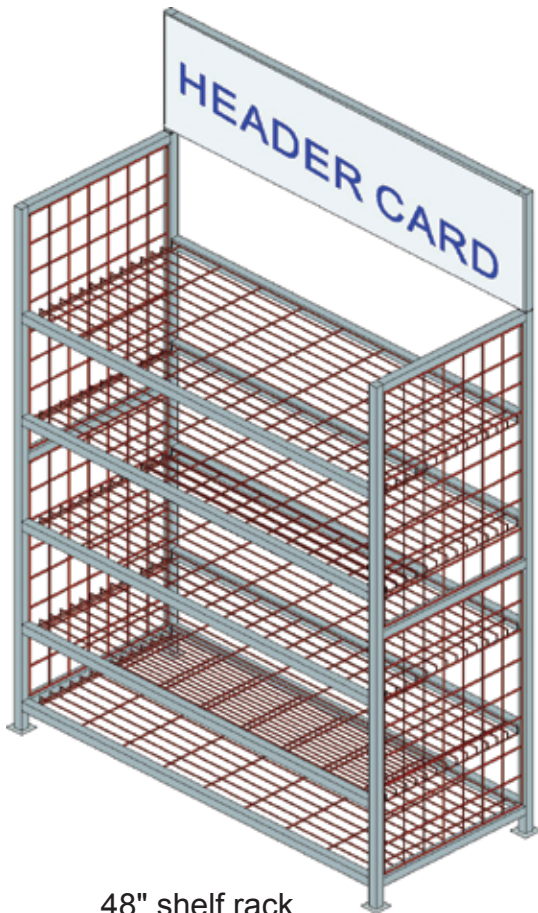
**Gauge**  
22 & 28

**Finishes**  
Galvanized

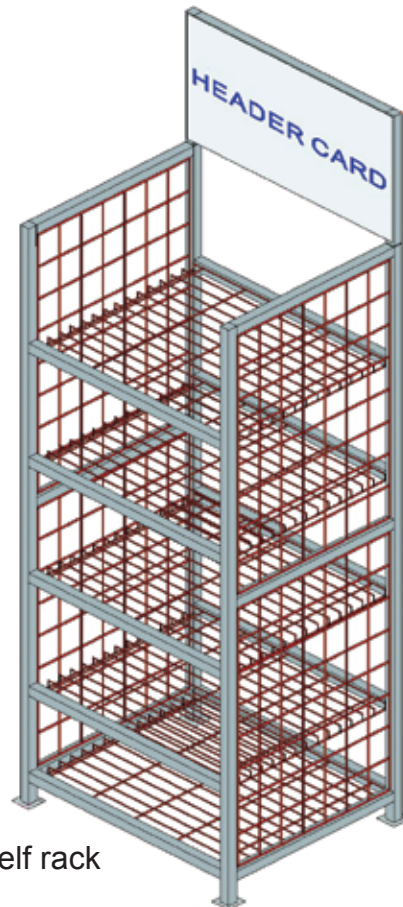




**DISPLAY RACK FOR  
CONCRETE ACCESSORY  
ITEMS AND FASTENERS**



48" shelf rack



24" shelf rack



**ALLIANCE**  
**ConstruXion**  
**GROUP**